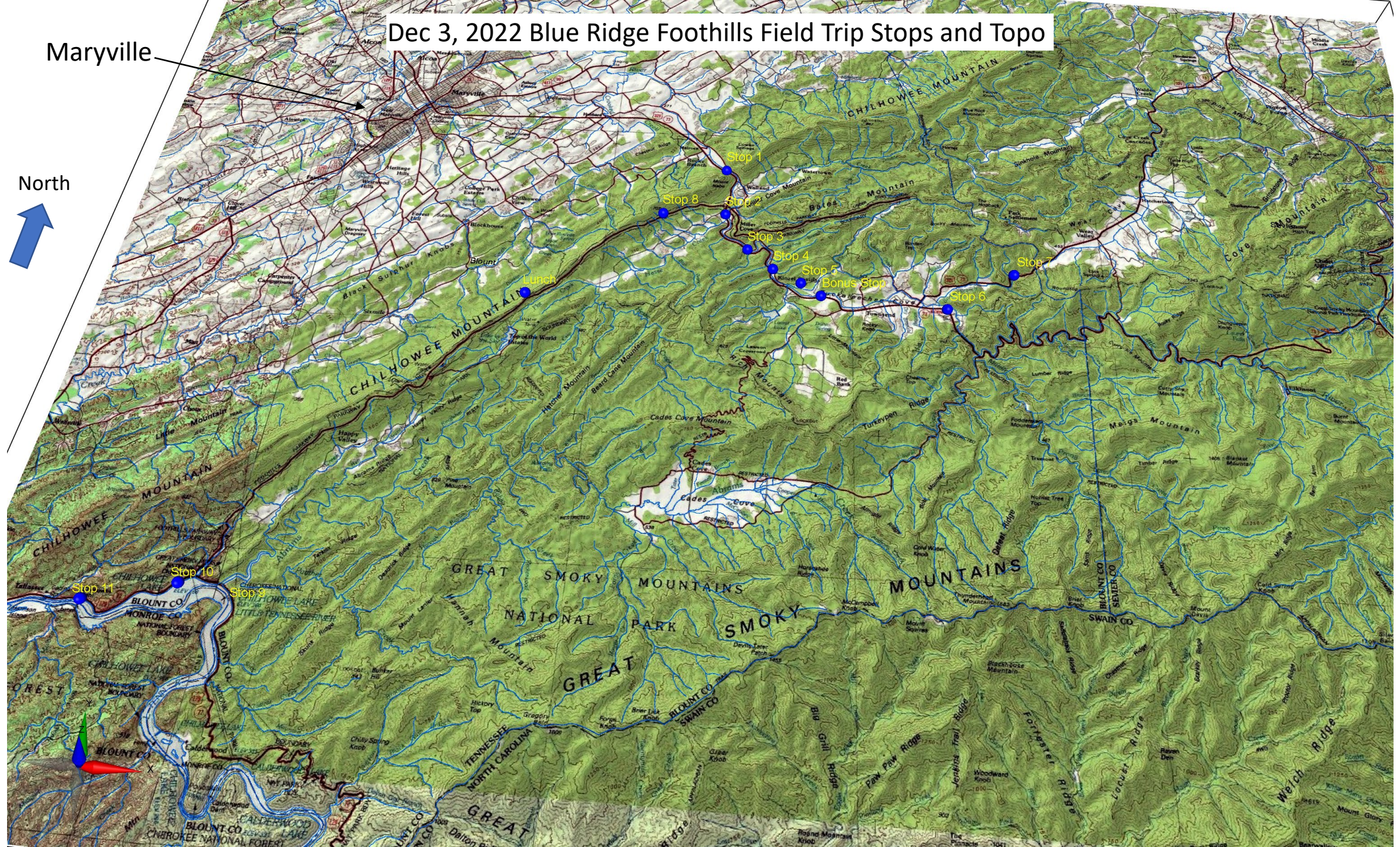


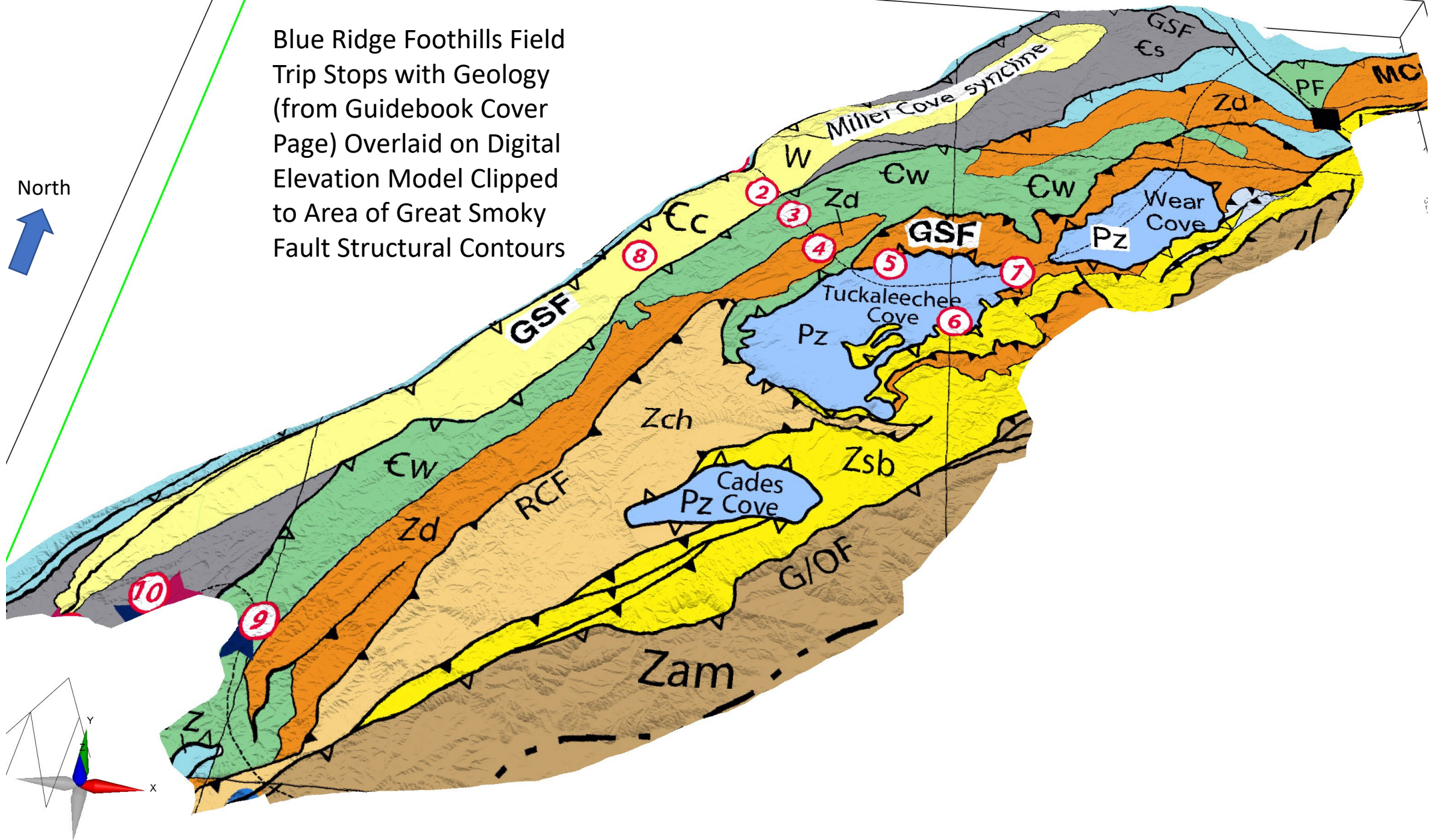
# Dec 3, 2022 Blue Ridge Foothills Field Trip Stops and Topo

Maryville



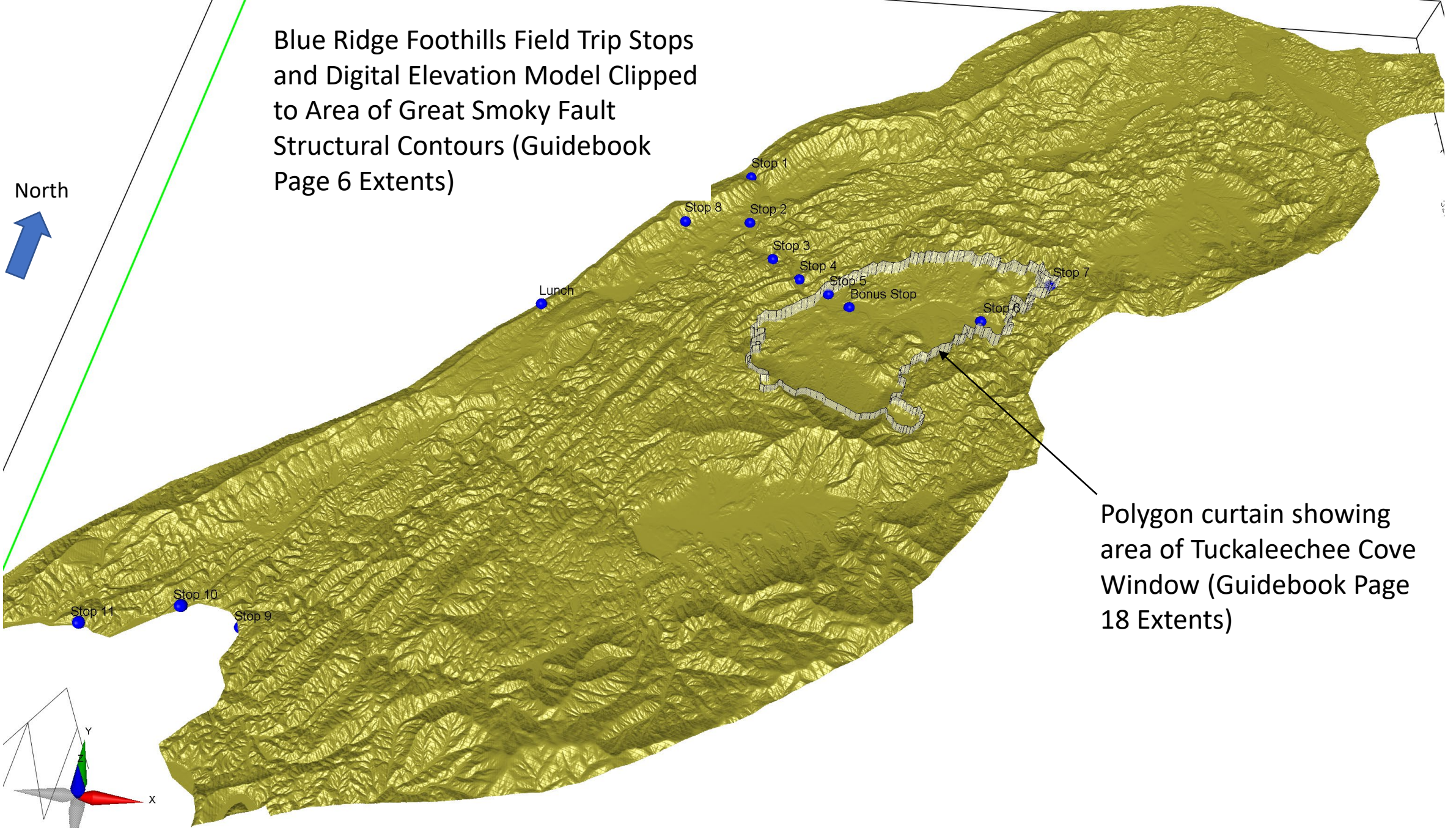
Blue Ridge Foothills Field Trip Stops with Geology (from Guidebook Cover Page) Overlaid on Digital Elevation Model Clipped to Area of Great Smoky Fault Structural Contours

North

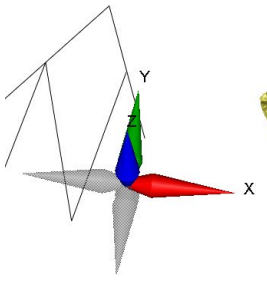


Blue Ridge Foothills Field Trip Stops  
and Digital Elevation Model Clipped  
to Area of Great Smoky Fault  
Structural Contours (Guidebook  
Page 6 Extents)

North

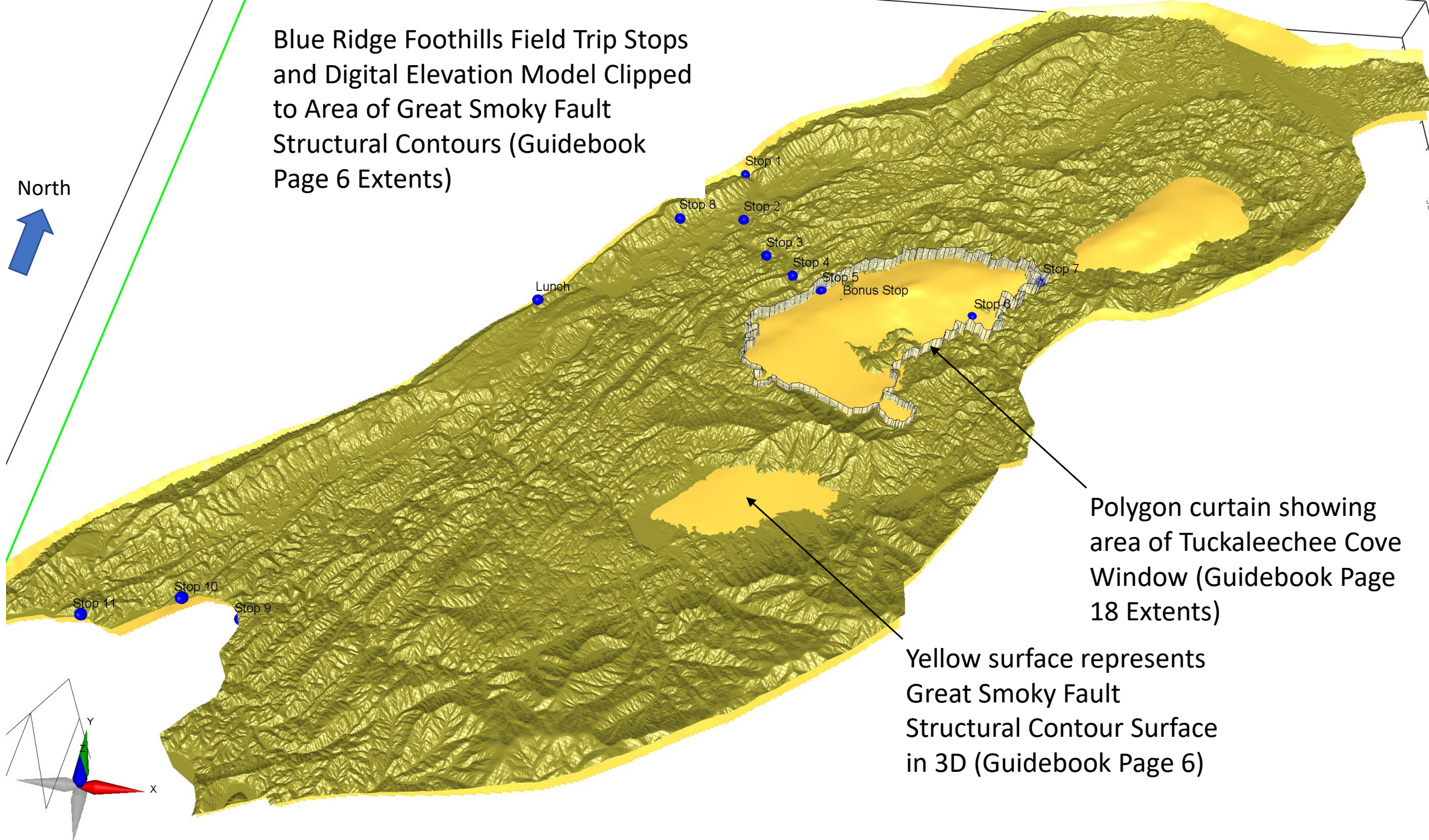


Polygon curtain showing  
area of Tuckaleechee Cove  
Window (Guidebook Page  
18 Extents)



Blue Ridge Foothills Field Trip Stops  
and Digital Elevation Model Clipped  
to Area of Great Smoky Fault  
Structural Contours (Guidebook  
Page 6 Extents)

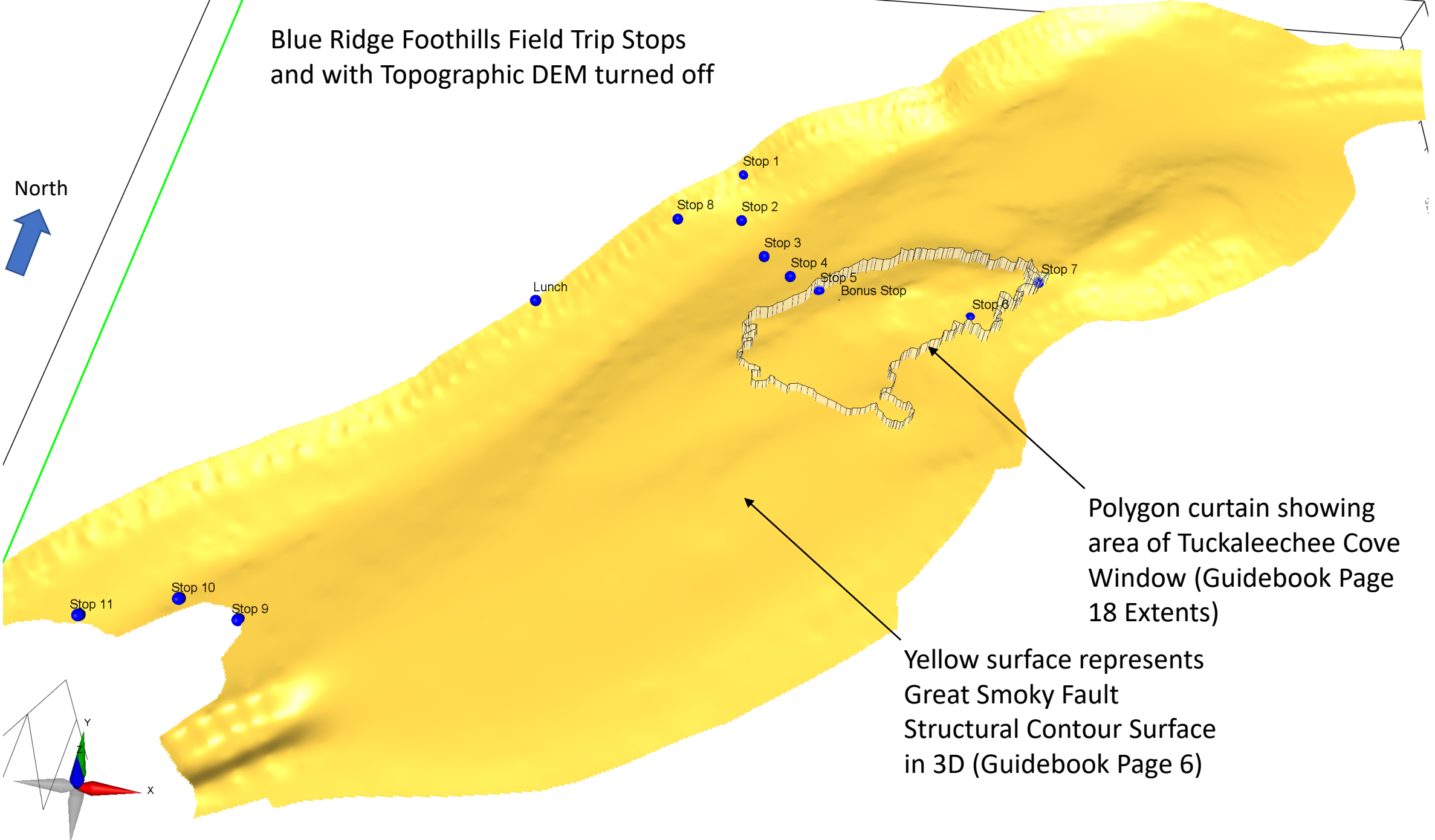
North



Polygon curtain showing  
area of Tuckaleechee Cove  
Window (Guidebook Page  
18 Extents)

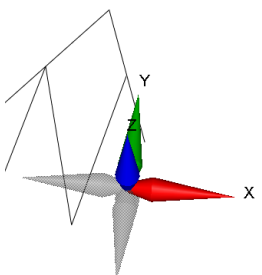
Yellow surface represents  
Great Smoky Fault  
Structural Contour Surface  
in 3D (Guidebook Page 6)

Blue Ridge Foothills Field Trip Stops  
and with Topographic DEM turned off

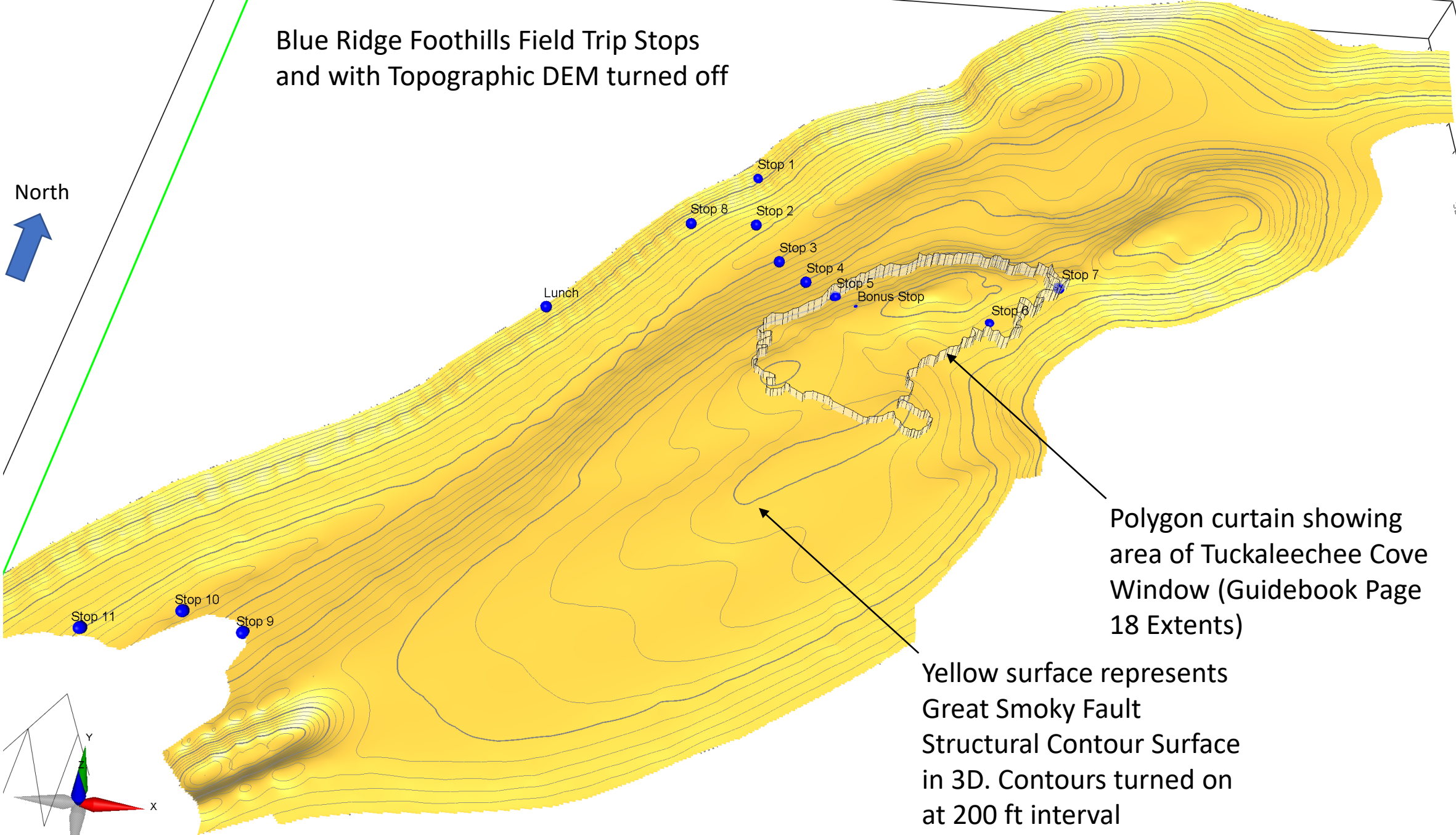


Polygon curtain showing  
area of Tuckaleechee Cove  
Window (Guidebook Page  
18 Extents)

Yellow surface represents  
Great Smoky Fault  
Structural Contour Surface  
in 3D (Guidebook Page 6)



# Blue Ridge Foothills Field Trip Stops and with Topographic DEM turned off



Polygon curtain showing  
area of Tuckaleechee Cove  
Window (Guidebook Page  
18 Extents)

Yellow surface represents  
Great Smoky Fault  
Structural Contour Surface  
in 3D. Contours turned on  
at 200 ft interval

